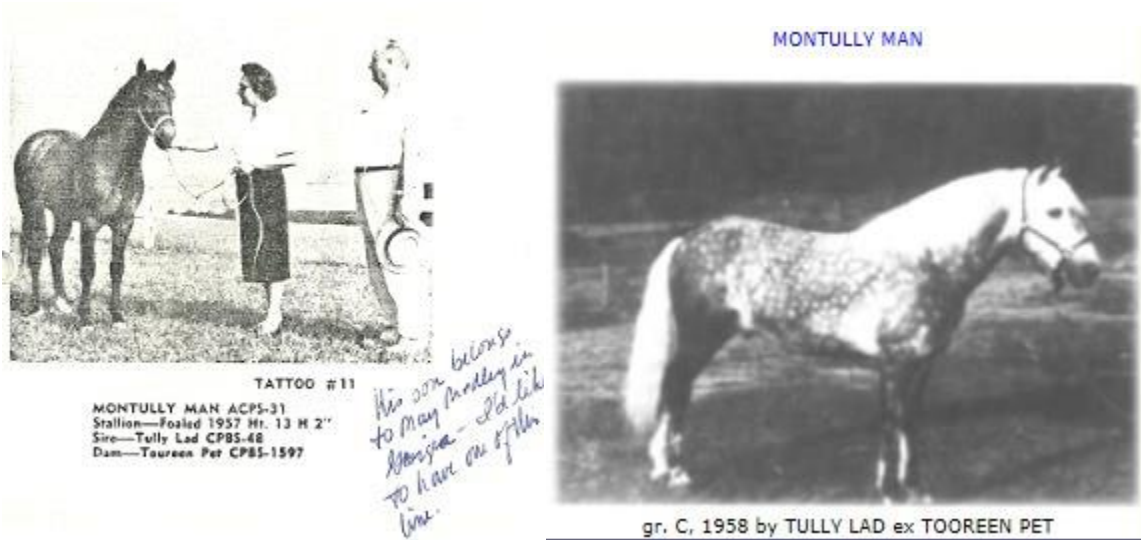


Montully Man: Tooreen Laddie - Hall of Fame Application - 2018

\*Montully Man was imported by Rose Hill Farm, who planned to use him as their junior herd sire, as he had breeding unusual even for Ireland (TULLY LAD x TOUREEN PET, she by TOUREEN LADDIE and out of AIR PET by AIRGED). As a bonus, \*MONTULLY MAN was a very flashy dark dapple grey with a thick silver mane and tail. At the time of the Rose Hill Farm dispersal, the Andrews family purchased \*MONTULLY MAN, along with several of the best imported mares.



MONTULLY MAN® gr. C, CONNEMARA PONY, 1958

**Color:** gr  
**Height:** 14.0h  
 S31 II  
 Imported from Ireland to USA by Rose Hill Farm. Very flashy dark dapple grey, with thick silver mane and tail. Purchased by the Andrews family in 1963, which eventually became Tullymor Connemaras.  
 (CLOSE)

MONTULLY MAN* gr 14.0h 1958 CONNEMARA PONY S31 II	TULLY LAD blk 13.3h 1938 CONNEMARA PONY	MOUNTAIN LAD gr 13.3h 1928 CONNEMARA PONY						
		TULLY BEAUTY blk 13.2 1932 CONNEMARA PONY MCPS374						
	TOUREEN PET gr 14.0h 1945 CONNEMARA PONY	TOUREEN LADDIE* gr 13.3 1947 CONNEMARA PONY S2/C86	INNISHGOILL LADDIE* gr 13.2 1934 CONNEMARA PONY CSB 21	REBEL* gr 13.2 1922	CANNON BALL* gr 13.3hh 1904			
			GREY SWAN CONNEMARA PONY M CP5475	DOOYHER LASS gr 137 cm 1924	SEA MIST Edit			
		AIR PET CONNEMARA PONY	AIRGED gr 135 cm 1938 CONNEMARA PONY CSB 45	REBEL* gr 13.2 1922	CANNON BALL* gr 13.3hh 1904			
		BLACK PET CONNEMARA PONY	NOBLE STAR gr 13.2 1928	DOOYHER LASS gr 137 cm 1924	SEA MIST Edit			
			BLOOMING HEATHER	JOHANNA	JOHANNA			
					BLACK PADDY blk 13.1 1916			
					REBEL* gr 13.2 1922			
					Edit			
				Edit				

\* - Photo Available

*Incomplete list of foals by Montully Man USA S31 II*

- 1960 u Pillagh Star CSB 1813, USAM 88 - Rose Hill's Tully Boy USAS 110
- 1961 u (W) - Flint Farm's Patience HB M 83
- 1961 u Cregs Southern Bell USAM 176 - Fiesta's Mara USAM 537
- 1961 u Cregs Winter Dame USAM 172 - Kaliko's Delight USAS 130
- 1961 u Cregs Winter Starbright USAM 163 - Tully's Bright Star USAM 252
- 1961 u Cullahara CSB 1601, USAM 76 - Land Gate Tully USAS 175
- 1961 u Irish Heaven USAM 99 - Irish Major USAS 103

1961 u Piper's Star CSB 1718, USAM 75 - Fiesta's Colleen USAM 538  
 1962 u Crock of Gold USAM 168 - Gretchen USAM 296  
 1962 u Doug's Honey Bun USAM 212 - Montully's Erris USAM 305  
 1962 u Gilliana Winter Dream USAM 160 - Rose Hill's Tiger USAS 152  
 1962 u Lady Gil-Linda USAM 159 - Basic Midnight G 91  
 1962 u Pillagh Star CSB 1813, USAM 88 - Bright Hour's Shamrock USAS 154  
 1962 u Rosehill Queen USAM 234 - Basic Star King USAS 259  
 1962 u Rosehill's Star USAM 233 - Inish Kerry G 89  
 1962 u Tarzy's Gay Girl USAM 236 - Pandora USAM 295  
 1963 u Bold Venture CSB 1651, USAM 59 - Bold Lady USAM 311  
 1963 u Castanet Lady USAM 209 - Ladies Man USAS 192  
 1963 u Cataula Tiger USAM 97 - Artful Dodger G 75  
 1963 u Doug's Honey Bun USAM 212 - Doug's Bunny USAM 552  
 1963 u Dunenough USAM 178 - Well Done G 8  
 1963 u Gill's Bonnie Lady USAM 207 - Denscots Tara USAM 298  
 1963 u Gill's Sandy Girl USAM 211 - Land Gate Minstrel Boy USAS 234  
 1963 u Glenhoughan Grey CSB 1757, USAM 72 - Rosehill's Montully Glenoughan USAS 170  
 1963 u Inver Twin CSB 1776, USAM 71 - Tully's Twin USAS 189  
 1963 u Rebel Rose USAM 177 - RHF Tully's Rose USAM 536  
 1963 u Rosehill Princess USAM 170 - Erin Starr USAM 400  
 1963 u Rosehill's Fair Lady USAM 235 - RBR Georgia Lady USAM 302  
 1965 u Rebel Nelly USAM 208 - Montully's Rebelle USAM 568  
 1967 u Marconi's Stormy Rebel USAM 567 - Tully's Miss Priss USAM 743  
 1967 u Rebel Nelly USAM 208 - Tully's Frosty Morn USAM 742  
 1970 u Marconi's Stormy Rebel USAM 567 - Mon Tully's Skeeter Rebel USAM 890  
 1970 u Tully's Bright Star USAM 252 - Tully's Twinkle Too USAM 891  
 1971 u Marconi's Stormy Rebel USAM 567 - [Montully's Son](#) USAS 307  
 u Marconi's Stormy Rebel USAM 567 - Perfect Fit USAM 1128

Montully Man is a “green line” stallion, which is not as highly represented in the US as the red, blue and purple lines, providing wonderful genetic diversity and true Connemara pony type to our US population.

Later on, the Andrews’ daughter, May Medley, who grew up riding Montully Man, learned from another very active and knowledgeable breeder (Caroline Nesbitt, I believe) the value and importance Montully Man’s qualities, and May dedicated herself to preserving those qualities and that line.

Montully Man’s primary contributions on the stallion side have been through Montully’s Son, though he has had a couple other significant stallion sons. Montully’s Son is reported to have 255 purebred offspring in the first 3 generations alone and over 390, when including partbreds.

In addition, Montully Man he has positively impacted American Connemaras through his daughters and grand-daughters.

Montully Man left a significant sire, Montully’s Son, to carry on the line.

Tullymor's Tully Rose, by Montully Son, out of Tullymor's Kelly O'Brannigan, was ACPS Region 4 show champion, as was her daughter, Tullymor's Blush, ACPS Premium Broodmare. Rose has produced the premium broodmare, Tullymor's Blush, as well as world-class combined driving pony, Captain Jack Sparrow (a.k.a Poppyfield's Shadowfax), FEI Advanced Single Pony Combined Driving Champion in 2011.

Tullymor's Anastasian Pearl, also by Montully Son, out of Kilkerrin's Rebel Doll, never showed, but is still contributing to the breed through her two daughters, Tullymor's Secret Pearl (o: Kathy Trum- Searah) and Tullymor's Annie May (o: Donna Duckworth)

The offspring of Montully Man and Montully's Son are too numerous to mention, but I would refer the committee to the write-up by Kelsie Staeheli \*attached and to also request a list (or number) from ACPS Registrar of progeny descending from Montully Man.

Surely there can be no doubt that Montully Man is deserving of a place in the ACPS Hall of Fame for his positive influence on the breed and is a more-than-deserving recipient of the Tooreen Laddie award, which is to celebrate the outstanding foundation sires, on which the breed standard is based.

\*Kelsie Staeheli, submitted an outstanding application for consideration in 2016 or 2017 for Montully's Son and I would like to reinforce the sentiment that either Montully Man or Montully's Son could be appropriately awarded the ACPS Tooreen Laddie award.